

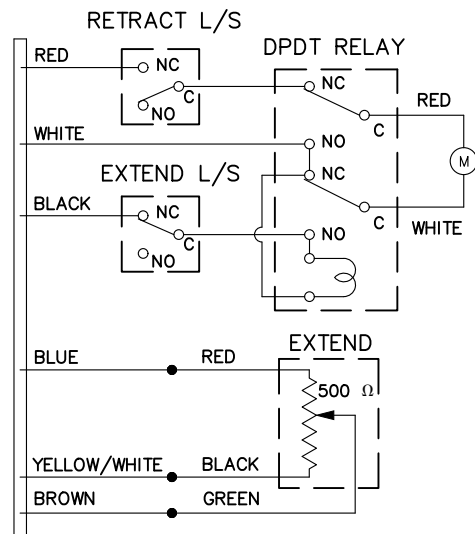
- NOTICE -

This drawing is a part of the proprietary article therein disclosed, and all design, manufacturing, reproduction, use, patent rights, and sales rights regarding the same are expressly reserved by Aero Space Controls Corporation, Wichita, Kansas. It is submitted under a confidential relationship for a specific purpose and shall not be disclosed to any unauthorized person or incorporated in any other projects.

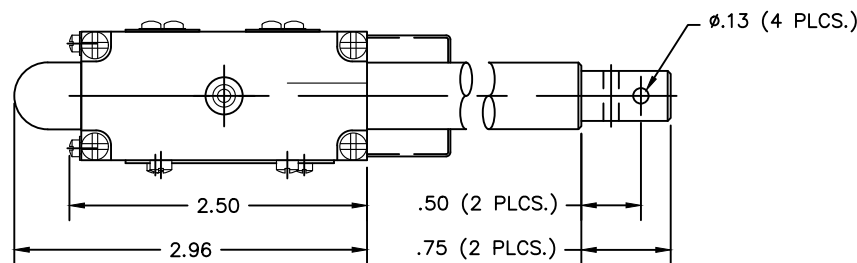
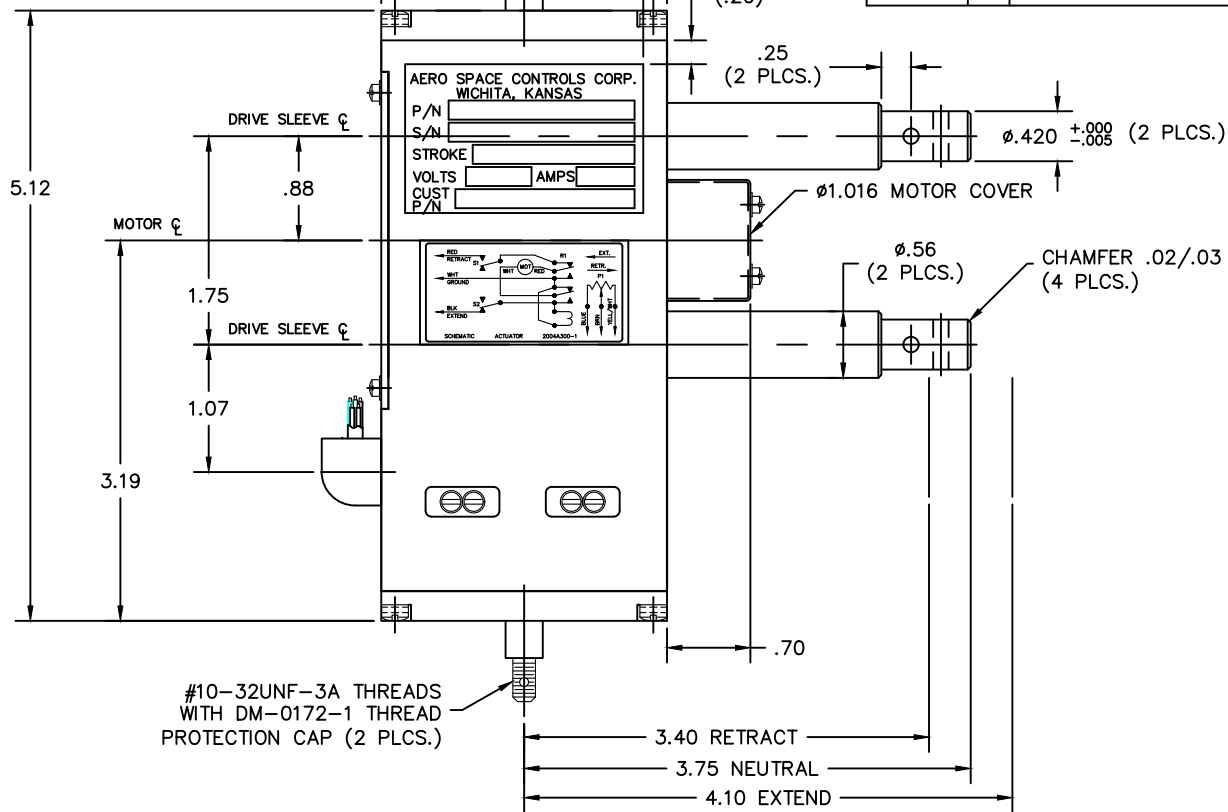
REVISIONS				
C.O. NO.	REV.	REVISION DESCRIPTION	DATE	APPD.
ASC4261	A	NOTE (13) IS '1.5 LB. MAXIMUM' WAS 'TBD'	1-17-07	S.A.
ASC4361	B	DETAIL NAMEPLATE AND SCHEMATIC PLATE	7-18-07	D.S.
ASC4490	C	REVISE TO MEET CUSTOMER REQUESTS	2-13-08	D.S.
ASC4529	D	MOVE ϕ .08 HOLE DIM./CALLOUT TO PLAN VIEW	5-7-08	D.S.
ASC5429	E	ON F.O.D. AT L.H. SIDE VIEW ADD DETAILING AND NOTATION TO CALLOUT FOR HEAT SHRINK REQUIREMENT OVER WIRES AND END SLEEVING	6-18-14	D.S.
ASC5495	F	ADD F/N (15) w/SYMBOLS SHOWN ON F.O.D.	11-7-14	D.S.
ASC5518	G	ELECTRICAL DECAL WIRE COLOR YELL/WHT WAS YELL. REMOVE FLAGNOTE (15)/F.O.D. SYMBOLS.	3-6-15	D.S.
ASC6158	H	REVISE DWG TO SHOW UPDATED STRAIN RELIEF. SEE ECO.	08-12-19	D.S.



20 GA. STRANDED 12.0 MINIMUM TEFLON INSULATED WIRE, 5.0 MINIMUM GLASS SLEEVING, 2" LG. HEAT SHRINK TO OVERLAP SLEEVING 1"



ELECTRICAL SCHEMATIC SHOWN IN RETRACT POSITION



NOTES CONTINUED:

7. VOLTAGE: 24/28 VDC
8. MAXIMUM CURRENT: 2.0 AMPS
9. ULTIMATE STATIC LOAD: 205 LBS.
LIMIT LOAD (MAXIMUM OPERATIONAL): 118 LBS.
NOMINAL OPERATING LOAD: 78 LBS.
10. STROKE LENGTH: .70 ±.030 IN.
11. TARGET SPEED: .035 IN./SEC. AT 50 LB. LOAD
12. AMBIENT OPERATING TEMPERATURE: -65°F TO +160°F
13. WEIGHT: 1.5 LB. MAXIMUM
14. SEE ASC DRAWING 2004301 FOR ASSEMBLY REQUIREMENTS

QTY.		ITEM	SIZE	PART NUMBER	DESCRIPTION	MATERIAL	MAT'L. SPEC.	FINISH	FINISH SPEC.
-1 DUAL RAM ACTUATOR									
LIST OF MATERIALS									
DIMENSIONAL SYMBOLS PER ASME Y14.5				UNLESS OTHERWISE SPECIFIED		SIGNATURES		DATE	
/ FLATNESS				1. DIMENSIONS ARE IN INCHES - TOLERANCES ON -		DR. D. ORTH		8-28-06	
- STRAIGHTNESS				FRACTIONS ± 1/16		CHK.			
< ANGULARITY				XX DEC ±.030 ANGLES ±0° 30'		ENGR.			
⊥ PERPENDICULARITY				XXX DEC ±.010 DRILL HOLES AND 10387		APPD. S. AXTELL		8-28-06	
// PARALLELISM				2. SURFACE ROUGHNESS PER ASME-B46.1		NEXT ASSY:			
◎ CONCENTRICITY				3. REMOVE BURRS & BREAK SHARP EDGES .010 MAX.		6. ALL DIMENSIONS BEFORE PLATING			
⊕ TRUE POSITION				4. INTERNAL RADII .005 TO .015		DO NOT SCALE DRAWING			
○ CIRCULARITY (ROUNDNESS)				5. STRAIGHT SCREW MIL-S-7742 TAPERED PIPE MIL-P-7105		CODE IDENT NO.		SIZE	
≡ SYMMETRY						C		DWG NO.	
Ⓜ (MMC) MAXIMUM MATERIAL CONDITION						SCALE 1:1		UNIT WT LBS	
Ⓢ (RFS) REGARDLESS OF FEATURE SIZE						SHT 1 OF 1		2004A300	

AERO SPACE CONTROLS CORPORATION WICHITA, KANSAS

DUAL RAM ACTUATOR

2004A300