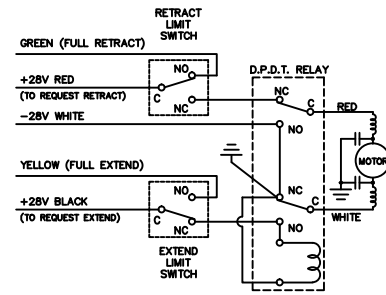
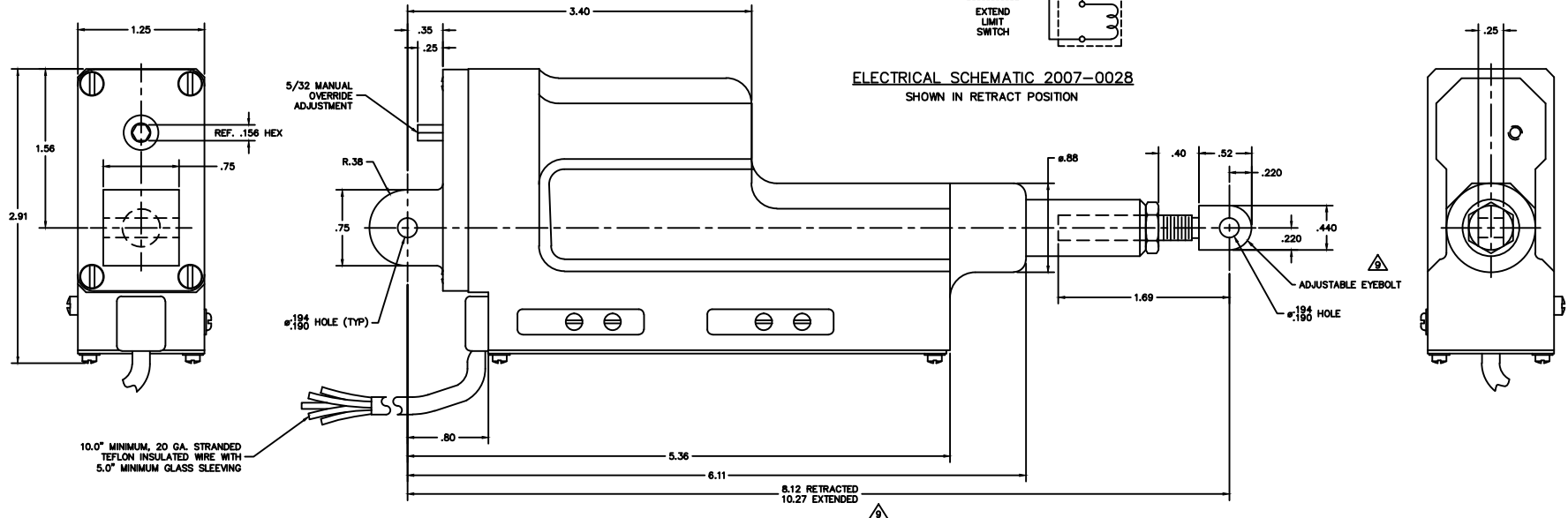


— NOTICE —  
 This drawing is a part of the proprietary article therein disclosed and all design, manufacturing, reproduction, use, patent rights, and other rights regarding the same are expressly reserved by Aero Space Controls Corporation. Hence, it is submitted under a confidential relationship for a specific purpose and shall not be disclosed to any unauthorized person or incorporated in any other projects.

REVISIONS			
C.O. NO.	REV.	REVISION DESCRIPTION	DATE



ELECTRICAL SCHEMATIC 2007-0028  
 SHOWN IN RETRACT POSITION



- NOTES CONTINUED:
- WIRE PER MIL-W-16878/4
  - VOLTAGE: 28 VDC
  - EYE BOLT ADJUSTMENT: ±.40 IN.
  - TOTAL STROKE SET WITH LIMIT SWITCHES: 2.15 IN.
  - MAXIMUM CURRENT: 2.0 AMPS WITH 25 LB. LOAD @ 28VDC
  - MAXIMUM STROKE TIME: 5 SECONDS MAXIMUM, IN EITHER DIRECTION, WITH A 25 LB. LOAD
  - WEIGHT: 1.4 LBS.
  - FOR ASSEMBLY SEE THE 2007-0028-101 DRAWING

DIMENSIONAL SYMBOLS PER ASME Y14.5	UNLESS OTHERWISE SPECIFIED	SIGNATURES	DATE	AERO SPACE CONTROLS CORPORATION WICHITA, KANSAS	
/ FLATNESS — STRAIGHTNESS < ANGLARITY ⊥ PERPENDICULARITY // PARALLELISM ⊙ CONCENTRICITY ⊕ TRUE POSITION ○ CIRCULARITY (ROUNDNESS) ≡ SYMMETRY Ⓜ (MMC) MAXIMUM MATERIAL CONDITION Ⓡ (RFS) REGARDLESS OF FEATURE SIZE	1. DIMENSIONS ARE IN INCHES — TOLERANCES ON — FRACTIONS ± 1/16 ANGLES ±0° 30' XX DEC ±.030 DRILL HOLES XXX DEC ±.010 AND 10387 2. SURFACE ROUGHNESS PER ASME-B46.1 3. REMOVE BURRS & BREAK SHARP EDGES .010 MAX. 4. INTERNAL RADII .005 TO .015 5. STRAIGHT SCREW MIL-S-7742 TAPERED PIPE MIL-P-7105	DR. D. ORTH CHK. ENGR. APPD. D. SIMON NEXT ASSY: 6. ALL DIMENSIONS BEFORE PLATING DO NOT SCALE DRAWING	1-2-14 1-2-14	TITLE <b>ACTUATOR ASSEMBLY            — OUTLINE —</b>	
				CODE IDENT NO. <b>D</b> SIZE <b>D</b> DWG NO. <b>2007-0028</b>	
				SCALE 2:1 UNIT WT 1.4 LBS SHT 1 OF 1	